

FRIATOOLS® TECHNICAL EQUIPMENT

EQUIPMENT ENGINEERED BY SPECIALISTS FOR SPECIALISTS

Having the correct tools to perform installation on site makes all the difference.

CLAMP 63 ALIGNMENT CLAMP d 20 – d 63



with angle adjustment (45°/90°) for heating coil fusion couplers, reducers, 45° and 90° elbows, and outlets on saddle fittings d 20–d 63. Optional version CLAMP63L also applicable for long couplers FRIALONG.

Article description	Order Ref.	Stock-status
CLAMP63	613020	1
CLAMP63L	613034	1

CLAMP 180 ALIGNMENT CLAMP d 63 – d 180



with angle adjustment (45°/90°) and two clamping elements for heating coil fusion couplers, reducers, and 45° and 90° elbows d 63, d 90, d 125, and d 180. Alignment clamp modular expandable. (Figure shows alignment clamp with two additional clamping elements).

Article description	Dimension	Order Ref.	Stock-status
Alignment clamp with two clamping elements	d 63, d 90, d 125 and d 180	613021	1
Additional clamping element	d 63, d 90, d 125 and d 180	613022	1
Reduction shell set d 110/d 160	d 110 and d 160	613023	1
T-piece extension kit	d 63, d 90, d 125 and d 180	613024	1

SQM MANUAL SQUEEZE-OFF TOOL FOR PIPES d 20 – d 125



for the temporary shutoff of HDPE and PE-Xa pipes d 20–d 125 in SDR 11 and SDR 17.6. Complies with DVGW GW 332.

Article description	Dimension	Order Ref.	Stock-status
SQM63	d 20 - d 63 (SDR 11)	613025	1
SQM125	d 63 - d 90 (SDR 11) d 90 - d 125 (SDR 17.6)	613026	1

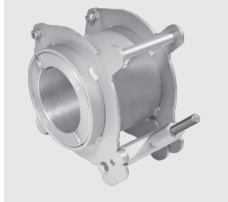
SQH HYDRAULIC SQUEEZE-OFF TOOL d 63 - d 180



for the temporary shutoff of HDPE and PE-Xa pipes d 63–d 180 in SDR 11 and SDR 17.6. Complies with DVGW GW 332.

Article description	Dimension	Order Ref.	Stock-status
SQH180	d 63 - d 180 (SDR 11/SDR 17.6)	613028	1

RRC RE-ROUNDING CLAMPS FOR REINSTATING ROUND CROSS SECTION OF SQUEEZED-OFF PIPES d 63 – d 180



for re-rounding squeezed-off HDPE and PE-Xa pipes d 63–d 180.

Article description	Dimension	Order Ref.	Stock-status
RRC90	d 63, d 75, d 90	613029	1
RRC110	d 110	613030	1
RRC125	d 125	613031	1
RRC160	d 160	613032	1
RRC180	d 180	613033	1



FWXR

MANUAL ROUNDING CLAMPS FOR PIPES d 63 - d 250

for retrospective rounding of HDPE and PE-Xa-pipes. Covering several dimensions due to the use of reducer spherical shells.



Article description	Dimension	Order Ref.	Stock-status
FWXR-S1	d 32, d40, d50, d63	613416	1
FWXR-S2	d 90, d 110	613431	1
FWXR-S3	d 125, d 160	613439	1
FWXR-S4	d 180, d 200	613443	1
FWXR-S5	d 225, d 250	613444	1

FWXRH

HYDRAULIC ROUNDING CLAMPS FOR PIPES d 280 - d 900

for the retrospective rounding of HDPE pipes.

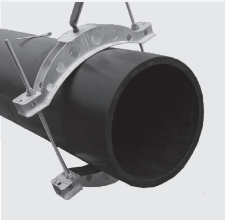


Dimension	Order Ref.	Stock-status
d 280	613452	3
d 315	613461	3
d 355	613462	3
d 400	613463	3
d 450	613464	3
d 500	613465	3
d 560	613467	3
d 630	613466	3
d 710	613468	3
d 800	613460	3
d 900	613458	3

FWXRB

MANUAL ROUNDING CLAMPS FOR PIPES d 800 - d 1200

for the retrospective rounding of HDPE pipes. Applicable across diameters for pipes d 800 - d 1800



Dimension	Order Ref.	Stock-status
d 800 - d 1200	613457	3

PCUT

PIPE CUTTER FOR d 20 – d 140

Pipe cutter with rapid adjustment for HDPE pipes d 20-d 140 in SDR 11.



Article description	Dimension	Order Ref.	Stock-status
Pipe cutter d 63	d 20 - d 63	613040	1
Pipe cutter d 140	d 50 - d 140	613041	1
Replacement cutting wheel d 63	d 20 - d 63	613042	1
Replacement cutting wheel d 140	d 50 - d 140	613043	1

PCUT S

PIPE SHEARS FOR d 20 – d 63

Lever action pipe shears for HDPE pipes d 20-d 63 in SDR 11.



Article description	Dimension	Order Ref.	Stock-status
Pipe shears d 40	d 20 - d 40	613044	1
Pipe shears d 63	d 20 - d 63	613046	1

