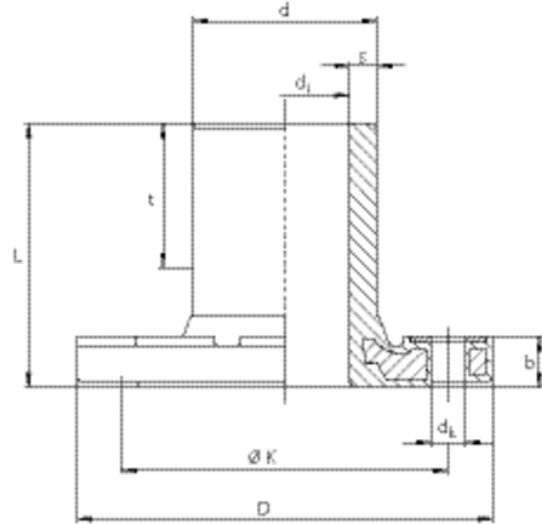


EFL

Full Faced Flanges (Spigot fittings)



PE 100 SDR 11

Maximum working pressure 16 bar (water)/10 bar (gas)



SKU	d/DN	BX	PU	D	L	t	dk	di	Ø k	s	Holes	b	Weight kg
615417	63/50	5	250	169	105	53	17,00	51	125	5,8	4	23	1,500
615418	90/80	5	160	204	130	71	17,00	72	160	8,2	8	25	2,540
615419	110/100	3	96	224	150	83	17,00	87	180	10,0	8	27	3,310
615605	125/100	2	64	224	160	85	17,00	101	180	11,4	8	30	3,280
615421	160/150	2	36	288	190	120	21,00	127	240	14,6	8	29	6,140
615927	180/150	2	36	288	200	120	21,00	123	240	16,4	8	31	6,660
615607	225/200	1	27	343	225	120	21,00	180	295	20,4	8	31	9,100

¹ Flange bore for PN 10

EFL

Full Faced Flanges (Spigot fittings)

Areas of Application

The FRIALEN Full Faced Flange EFL is used for the connection between HD-PE and another material or valve up to PN 16. EFL d 63-180 bolt circle for PN 10 and PN 16. EFL d 225/DN 200 is available only with a PN 10 bolt circle.

Assembly Instructions

The Full Faced Flange is installed without pressure. Please refer to the FRIALEN Assembly Instructions regarding preparations for FRIALEN fusion on the flange adaptor (marking insertion depth, removing oxide skin, cleaning etc.).

DIN EN 1092-1 applies to bolt circle diameter, measurements and number of bolts.

All commercial profile and flat gaskets can be used. Please observe the bolt torque specifications by the gasket manufacturer. We recommend profile gaskets type G-St.

EFL

Full Faced Flanges (Spigot fittings)

Good reasons for the FRIALEN-Full Faced Flanges EFL:

- Flange adaptor and flange are one construction component and make a homogeneous unit
- The cold flowing properties well known with HD-PE are avoided through this constructive configuration
- Solid construction. Integration of the flange prevents tear-off